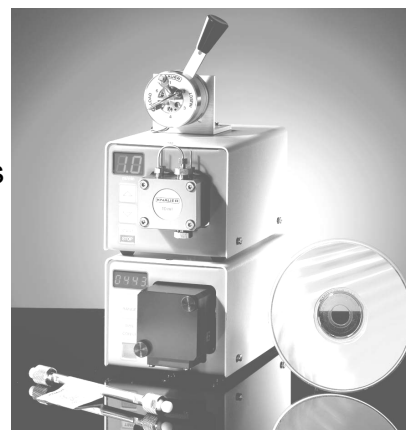
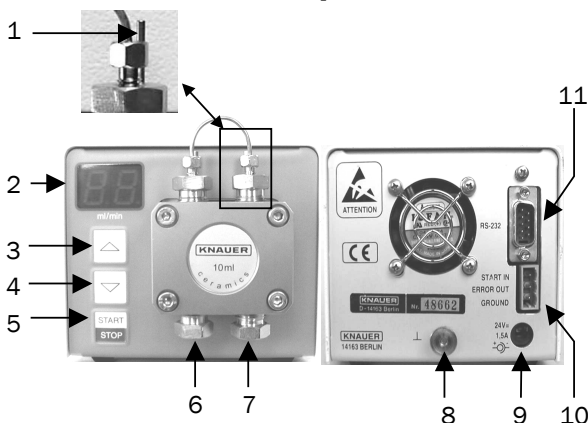


### I. Components:

1. Detector K-200 with accessories
2. Pump K-120 with accessories
3. Power supply with distributor and cables
4. Injection valve
5. System accessories
6. CHANCE Software (optional)
7. Laptop (optional)
8. Manometer (optional)

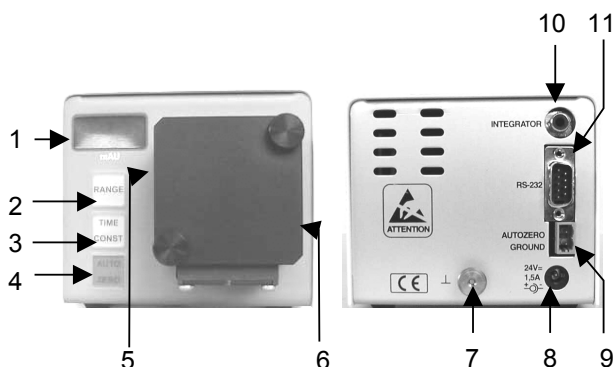


### II. HPLC Pump K-120:



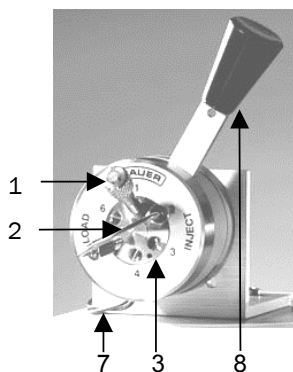
1. Piston Back Flush
2. Display
3. Increase Flow Rate
4. Decrease Flow Rate
5. START/STOP Key
6. Pump Head Outlet
7. Pump Head Inlet
8. Ground
9. 24 V Power Connection
10. Remote Control Socket
11. RS 232 Interface

### III. K-200 Fixed Wavelength Detector (254 nm):



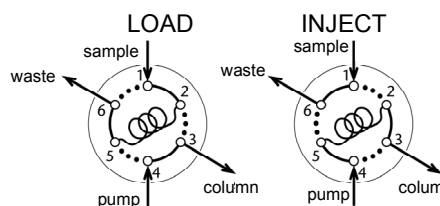
1. Display
2. Range (1V = 1 / 0,1 / 0,01 AU)
3. Time Constant
4. AUTO ZERO
5. Flow Cell Inlet
6. Flow Cell Outlet
7. Ground
8. 24 V Power Connection
9. Remote Control Injection Valve Connection
10. Integrator Connection
11. RS 232 Interface

### IV. Injection valve:

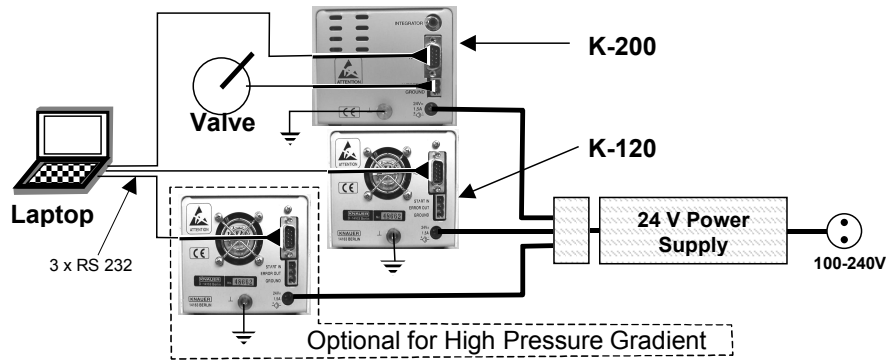


1. Injection Port → 1
2. Sample Loop 2 → 5
3. Ports 3 → Column
4. ← Pump
6. → Waste
7. Detector Connection
8. Manual Switch

#### Injection Valve Positions

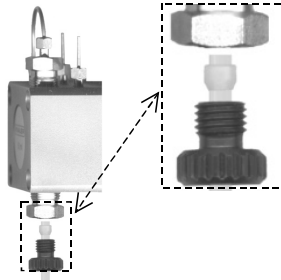


## V. Wiring:

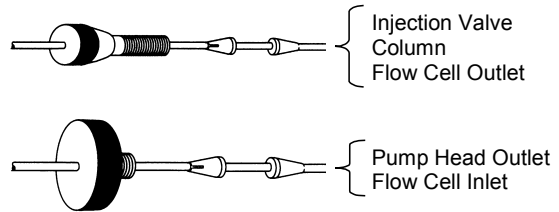


## VI. Tubing:

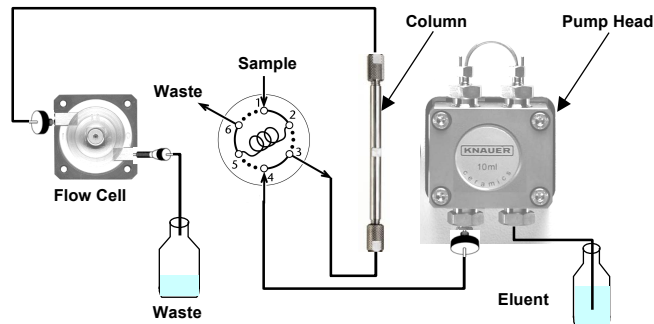
Pump Head Inlet:



Injection Valve, Flow Cell and Pump Head Outlet:



## VII. Isocratic HPLC System:



## VIII. High Pressure Gradient System:

